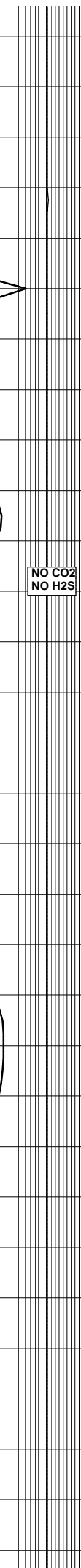
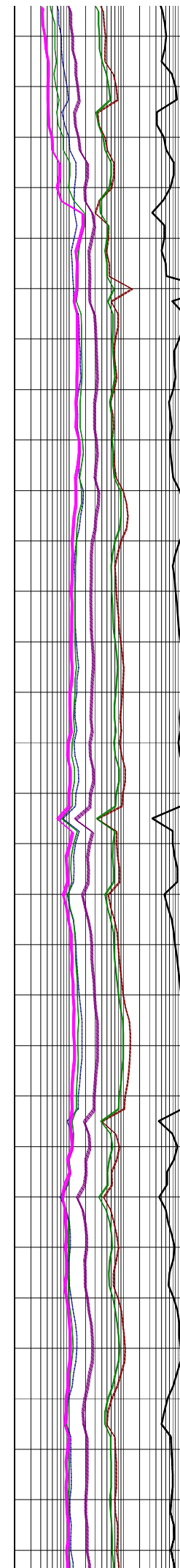
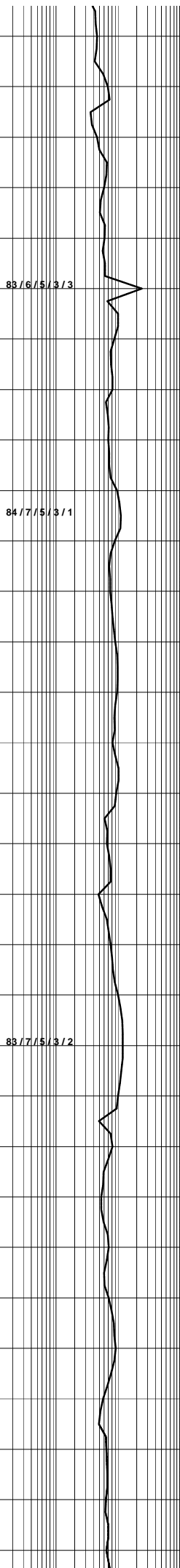
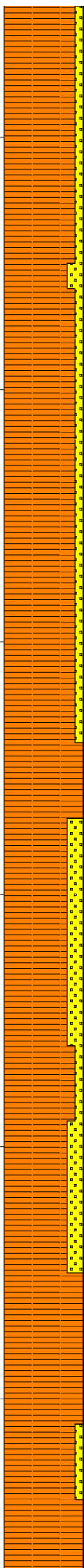


3000  
3010  
3020  
3030  
3040  
3050



7" CASING SHOE  
SET @ 2998m

Bit 4 : REED DSX516M  
Size: 6" Jets:5x14  
In: 3002m Out: xxxxm  
Run: xxxxm Hrs: xx.xx  
Cond: x-x-xx-x-x-x-xx-xx

LOT @ 3005m with 9.5ppg  
2275psi, EMW = 13.8 ppg

SANDSTONE:off wh,pl gry i/p,vf-f,  
mod wl srt,sbrnd,com mod strg sil  
cmt,abdt off wh arg mtx,tr fld liths,  
tr carb spks,mod hd-hd,v pr vis por,  
no fluor.

83/6/5/3/3

84/7/5/3/1

NO CO2  
NO H2S

SILTY CLAYSTONE:med-dk gry,med  
brn/gry,aren,com grd to SLTST,mnr  
micmic,tr carb spks & off wh liths,  
mod hd-hd,blky.

SURVEY @ 3020.0m: 6.75° 332T

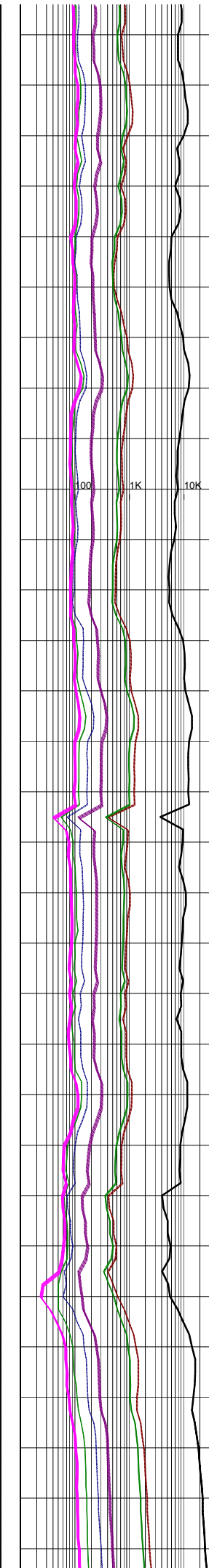
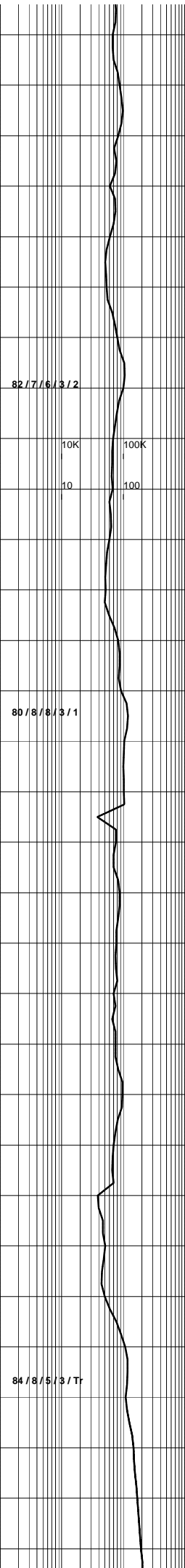
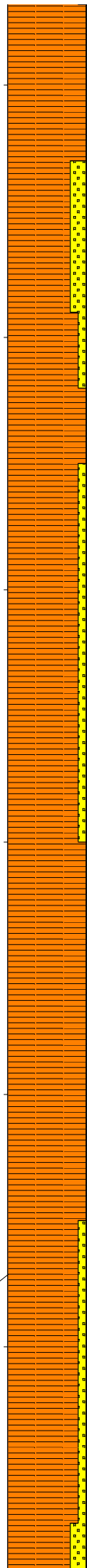
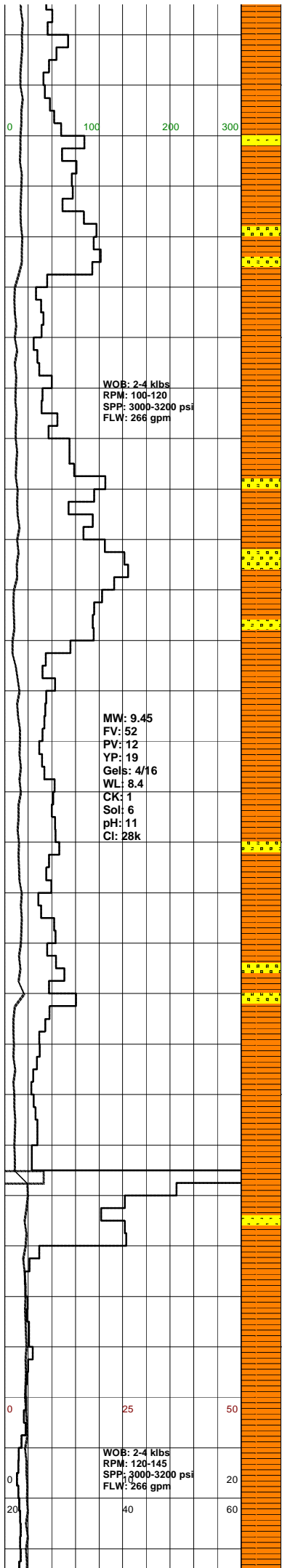
SANDSTONE:pl gry,off wh i/p,vf-f,  
mod wl srt,sbrnd,com mod sil cmt,  
mnr off wh/pl gry arg mtx,tr lt brn liths,  
mod hd,v pr vis por, no fluor.

83/7/5/3/2

SILTY CLAYSTONE:dk gry,dk brn/  
gry,aren,com grd to SLTST,mnr micmic,  
tr off wh liths,mod hd,hd i/p,blky-  
sbbly.

SANDSTONE:off wh,lt gry i/p,vf-  
f,mod wl srt,sbang-sbrnd,mod strg  
sil cmt,mnr off wh arg mtx,com carb  
spks,tr gr/brn liths,mod hd,v pr  
vis por,no fluor.

WOB: 2-4 klbs  
RPM: 100-115  
SPP: 2900-3000 psi  
FLW: 260 gpm



NO CO2  
NO H2S

SILTY CLAYSTONE: v dk gry, dk  
brn/gry, occ pl grn/gry, aren, com grd  
to SLTST, tr carb spks & lt brn liths,  
mod hd, occ frm, sbbiky.

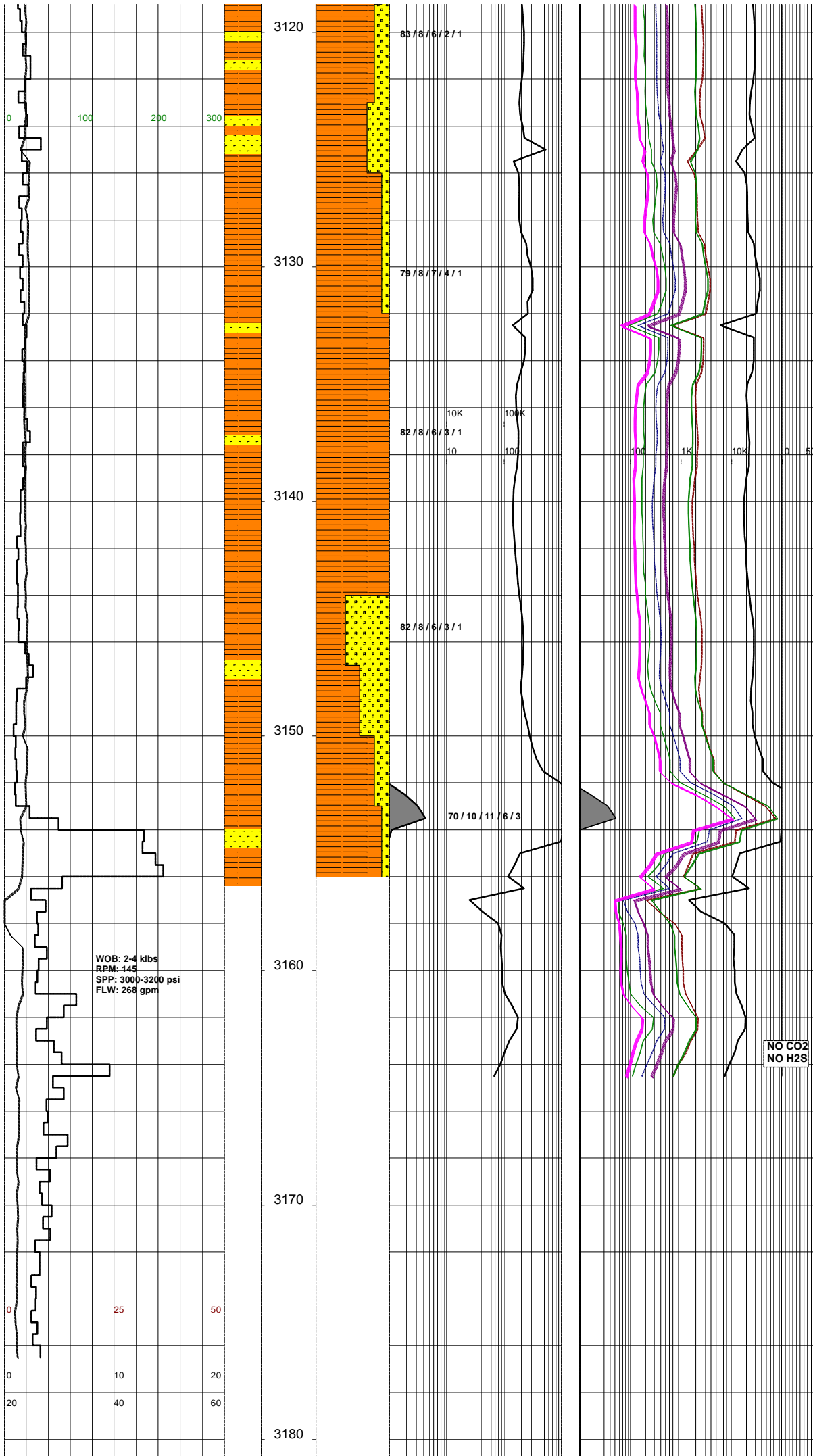
SILTY CLAYSTONE: v dk gry, dk  
brn/gry, occ pl grn/gry, aren, com grd  
to SLTST, tr carb spks & lt brn liths,  
mod hd, occ frm, sbbiky.

SLOW ROP DUE TO BIT BALLING

SURVEY @ 3108.0m: 8.5° 342T

NO CO2  
NO H2S

SILTY CLAYSTONE: dk-med gry, dom  
dk gry, occ lt gry, lt brn gry, arg,  
aren i/p, grd to SLTST, feebly calc,  
micmic, tr liths, tr carb spks, sft-  
mod hd, occ hd, sbbiky.



**SANDSTONE:**wh,off wh,lt gry,f-med,dom f,pr-mod srt,sbang-sbrnd,mod calc cmt,occ sil cmt,tr feld,abdt blk,brn,grn,gry,red liths,mod-occ hd,no vis por,min flour only.

**SILTY CLAYSTONE:**dk-med gry,dom dk gry,occ lt gry,lt brn gry,arg,aren i/p,grd to SLTST,feebly calc,micmic,tr liths,tr carb spks,sft-mod hd,occ hd,sbblky.

**SANDSTONE:**wh,off wh,lt gry,f-med,dom f,pr-mod srt,sbang-sbrnd,mod calc cmt,occ sil cmt,tr feld,abdt blk,brn,grn,gry,red liths,mod-occ hd,no vis por,min flour only.



